

Cluster CHRONICLES

from the Pottstown Cluster of Religious Communities

News | Events | Opportunities

FEBRUARY 2022

POTTSTOWN CROP
HUNGER WALK
PAGE 1

FOOD INSECURITY
AMONG COLLEGE
STUDENTS
PAGE 2

GET INVOLVED AND
MAKE A DIFFERENCE
PAGE 3

AROUND PCRC:
OPPORTUNITIES
PAGE 4

INSIDE

**STAY CONNECTED AND GET THE
LATESTS**

updates!



@Pottstown Cluster of Religious Communities



@pcrcoutreach



@ClusterOutreach



@PottstownCluster

Cluster CHRONICLES

from the Pottstown Cluster of Religious Communities

Pottstown CROP HUNGER WALK

ENDING HUNGER ONE STEP AT A TIME



[Register Here!](#)

The Pottstown CROP Hunger Walk is the heart and “sole” of Pottstown. It is the only event that brings together all members of our community — young and old, all faiths and walks of life for a common goal — to end hunger, one step at a time!

This year we invite you to join the Pottstown Cluster of Religious Communities’ team, create your own team, or walk as an individual to help end hunger in the greater Pottstown area and globally. You can walk anytime and anywhere, individually or in socially distanced groups. The date for the walk is April 30, 2022, meaning that is the deadline for walks to be completed and money to be collected. Learn more and register at: pottstowncluster.org/pottstowncrophungerwalk2022.

WALK. GIVE. CHANGE THE WORLD.

Pottstown
CROP HUNGER WALK

APRIL 1-30, 2022

POTTSTOWN, PENNSYLVANIA

Why Join and Why Support?

Let's make a local and global difference! The Pottstown CROP Hunger Walk will support the mission of the Pottstown Cluster of Religious Communities as twenty-five percent of funds raised will support local efforts to provide food security to those in need in the Pottstown area. The funds raised are administered by Church World Services and seventy-five percent is directed to international hunger.

Cluster CHRONICLES

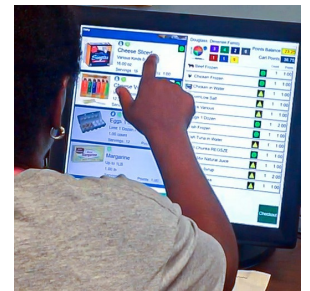
from the Pottstown Cluster of Religious Communities



Food Insecurity Among College Students

According to the College and University Food Bank Alliance, there are at least 700 food pantries on U.S. college campuses, up from 88 a decade ago. Reasons for growing food insecurity among college students are complex and some include rising enrollment of low-income students, family responsibilities, rising tuition and housing costs, meal plan prices, indirect expenses, financial independence, and inconsistent accessibility to food.

The Pottstown Cluster of Religious Communities, as a supporting member of the College Student Basic Needs Project (CSBNP), is working to help put nutritious food in the hands of college students who are facing food insecurity at Montgomery County Community College west campus in Pottstown. The project will include the use of SmartChoice™ food pantry shopping software through which students will order nutritious food from the Pottstown Cluster of Religious Communities for delivery to Montgomery County Community College west campus in Pottstown.



About the College Student Basic Needs Project (CSBNP) - Development of Satellite Pantry:

CSBNP is implementing a program to address food and housing insecurity and other basic needs of under-resourced college students at Gwynedd Mercy University and Montgomery County Community College. CSBNP plans to operate the program on a pilot basis through the 2023 spring semester. Core members include Gwynedd Mercy University, Manna on Main Street, and Montgomery County Community College. Supporting members include Family Promise Montco PA, Montgomery County Anti-Hunger Network, Pottstown Cluster of Religious Communities, and Your Way Home Montgomery County.



Cluster CHRONICLES

from the Pottstown Cluster of Religious Communities

Get Involved and Make a Difference

Volunteer opportunity!

Volunteer at our Outreach Center food pantry. Help our food services team sort fresh produce, distribute produce, unpack boxes and stock shelves. Ability to lift 40-50 lbs.

8:30 a.m. - 4 p.m. position, weekly.

Location: Pottstown Cluster Outreach Center located at 57 North Franklin Street in Pottstown



If interested, please contact volunteer@pottstowncluster.org

Donate Winter Hats and Gloves

Did you know forty-percent of the nation's homeless are unsheltered and many lack access to vital resources including insulated winter clothes. You can help those in need in your community prepare and respond to extreme cold winter weather by donating new winter hats and gloves at our Outreach Center Monday - Friday between 9 a.m. and 3 p.m.

Donate New Adult Winter Hats and Gloves

HELP OUR MOST VULNERABLE PREPARE FOR COLD WINTER WEATHER.

ITEMS CURRENTLY NEEDED:
NEW NON-HANDMADE ADULT WINTER HATS AND GLOVES

DONATION

Donations can be dropped off at 57 N. Franklin Street Monday - Friday between 9:00 a.m. and 3:00 p.m.

PottstownCluster
OF RELIGIOUS COMMUNITIES
Nourishing Lives. Strengthening Families.

Cluster CHRONICLES

from the Pottstown Cluster of Religious Communities

Around PCRC: Opportunities



When You Work With Us You Are:

- Helping to meet individuals' basic needs and transforming lives in the Greater Pottstown Community and beyond.
- Making a positive change in the lives of others and helping them achieve self-sufficiency.
- Generating enthusiasm and hope for staff, volunteers, and clients.
- A part of an established network of worship centers and other community organizations committed to our work.

[View Open Positions Here](#)

Our Values of Excellence

COMPASSION

INCLUSION

INTEGRITY



POTTSTOWN CLUSTER OF RELIGIOUS COMMUNITIES

Cluster CHRONICLES

from the Pottstown Cluster of Religious Communities

Cluster Chronicles is the newsletter of the Pottstown Cluster of Religious Communities

PottstownCluster
OF RELIGIOUS COMMUNITIES

Nourishing Lives. Strengthening Families.



WWW.POTTSTOWNCLUSTER.ORG